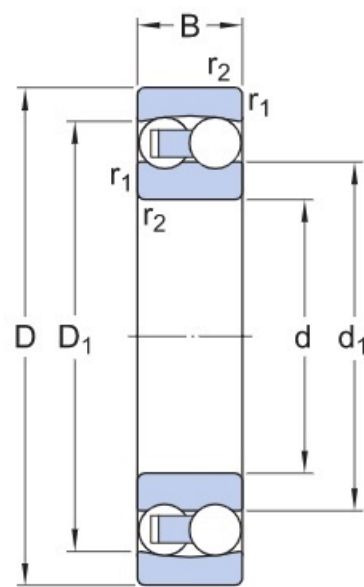


# 1203 DKFL



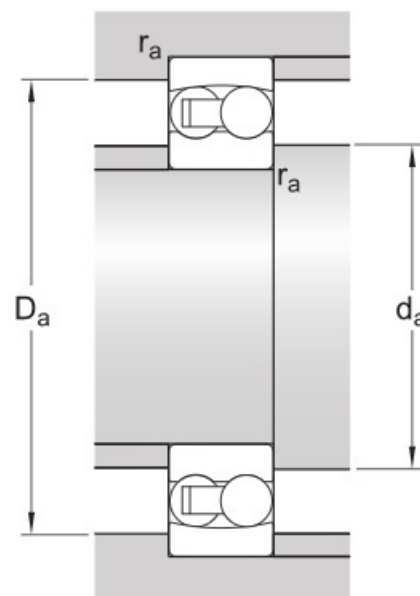
Bore type

Cylindrical



## Dimensions

d	17 mm	Bore diameter
D	40 mm	Outside diameter
B	12 mm	Width
d <sub>1</sub>	≈ 24 mm	Shoulder diameter inner ring
D <sub>1</sub>	≈ 32.9 mm	Shoulder diameter outer ring
r <sub>1,2</sub>	min. 0.6 mm	Chamfer dimension



## Abutment dimensions

d <sub>a</sub>	min. 21.2 mm	Abutment diameter shaft
D <sub>a</sub>	max. 35.8 mm	Abutment diameter housing
r <sub>a</sub>	max. 0.6 mm	Fillet radius

## Calculation data

Basic dynamic load rating	C	8.84 kN
Basic static load rating	C <sub>0</sub>	2.2 kN
Fatigue load limit	P <sub>u</sub>	0.114 kN
Reference speed		38 000 r/min
Limiting speed		24 000 r/min
Permissible angular misalignment	α	2.5 °
Calculation factor	k <sub>r</sub>	0.04
Calculation factor	e	0.31
Calculation factor	Y <sub>0</sub>	2.2
Calculation factor	Y <sub>1</sub>	2
Calculation factor	Y <sub>2</sub>	3.1

## Mass

Mass bearing

0.073 kg